

BARRIER 60

Automatic Traffic Barriers for large shut-off widths in the industrial or public sector *Plug & Play coated in all RAL colors*

In the security field and control of your site, we offer you high-quality products and systems: **The BALU barrier system 60** is suitable for shut-off widths up to 6m and is the ideal solution for the control of public commercial and industrial areas.

The modular, powder-coated housing offers protection against corrosion and is optimized against wind load. The cover serves as a flashing light and inspection cover, so you can easily and conveniently access the easily accessible electronics settings easy to make.

The red-white barrier tree with active safety bar and lighting is easily recognizable day and night. Our **BALU barrier systems 60** blend in optimally with your environment. Thanks to state-of-the-art technology, the **BALU barrier system 60** is the best solution for your project.

The drive for the **BALU barrier system 60** impresses with its very high torque and extremely low power consumption. The high torque guarantees the best possible operation, even under the most extreme weather conditions (wind, snow, etc.). Engine, engine control and transmission form a compact drive unit.

All our products are according to the latest standards and guidelines developed, built and tested. They meet the demanding requirements of the Product Safety Certification Organization and the applicable European Directives.



Benefits



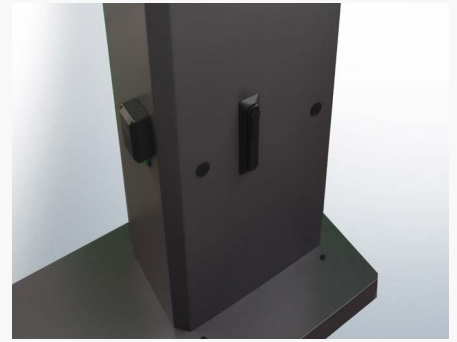
Modern LED lighting and housing design

The integrated LED flashing light ensures absolute visibility and is very low maintenance. The powder coating is available as standard in a wide range of RAL standard colors or on request in a wide variety of special colors. The door element is equipped with a comfortable swing lever lock to ensure easy accessibility of the gear unit and motor unit.



Intervention protection and Barrier arm

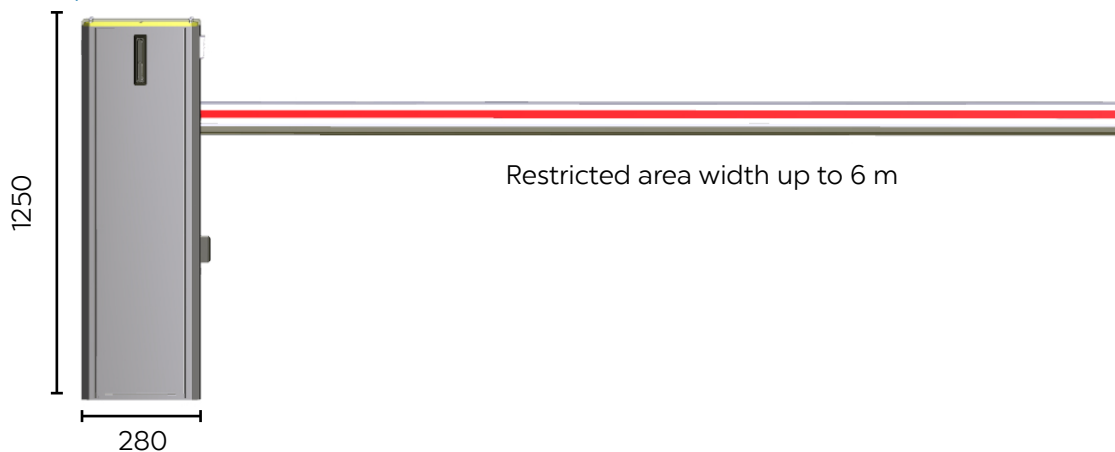
In order to guarantee maximum safety, the barrier boom is always equipped with an active safety contact strip at the bottom. The red-white powder coating of the tree ensures good visibility during the day and with special LED lighting even at night. The barrier boom is also optionally available up to a maximum shut-off width of up to 5 meters with a massive pendulum support.



Control

The cabinet system includes an integrated controller with encoder technology, which is easily accessible through the lid of the housing for various adjustment or maintenance work. The thoughtful Housing also has room for the installation of additional components, e.g. a GSM module or timers. The holders for photocells are mounted directly on the housing.

Measure (mm)



Technical specifications

Blocking width	max. 6 m
Opening / closing time (90 °)	4 - 8 s
Supply	230V /24 V
Current consumption	max. 15A
Maximum power	300 W
Drive technology	Plug and Play
Torque	600 Nm
Housing dimensions (B / T / H)	450 x 280 x 1250 mm
Protection class	IP 54
Temperature range	- 20° bis + 55 °C

Additional equipment:

- Powder coating in many RAL standard colors or on request in special colors
- Pendulum support or support post
- Buckling tree for lower rooms
- LED barrier tree lighting
- Active safety contact strip on the tree's lower edge
- Additional modules like TCP / IP, counting module (Access Pro barrier only)
- Tree grid
- Climb-over protection

For more information, visit us: www.b-alu.at